

**PT. Capitol Nusantara Indonesia Tbk**

Perkantoran Permata Eksekutif Blok R1/3-R2/3
 Pos Pengumben, Kebon Jeruk, Jakarta Barat
 11550, Indonesia
 Telp. +62 (21) 530 7340, Fax. +62 (21) 532 6254

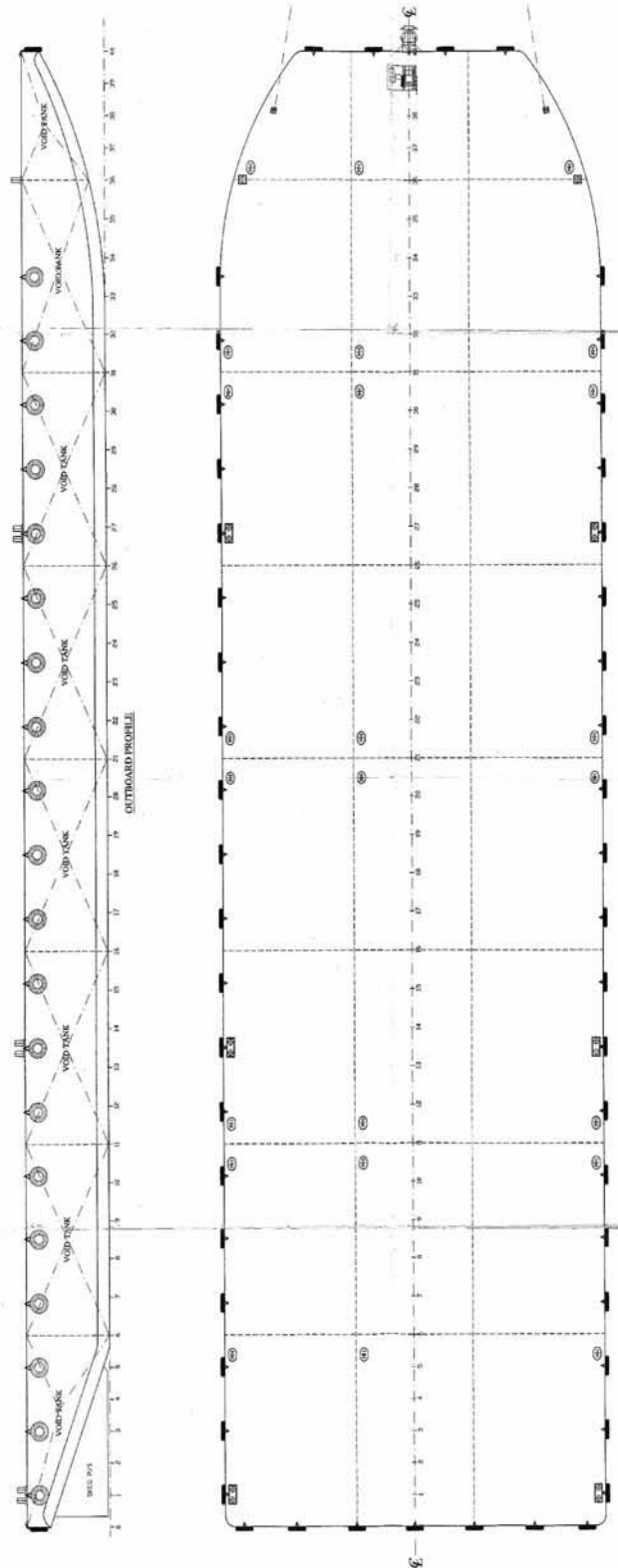
Email. charter@cani.co.id, Website. www.cani.co.id

BG. AKT 233**230 FT DECK CARGO BARGE**

PRINCIPAL PARTICULARS		DECK EQUIPMENT
Class	BKI A100 P "Ponton	1 Set Manual Anchor Winch c/w 75 m steel 1 Stockless Anchor 480 kg Bollards Smith Towing Brackets Forward and Aft. Navigation Lights
Registration Mark	2008 PPM No. 908/L	
Port of Registry	Samarinda	
Year / Place of Built	2009 / Batam	
Builder	PT. Jasamarin Engineering	
Hull Number		
Keelaying		
Length (oa)	70,10 m – 230 Feet	
Breadth (mld)	19,51 m – 64 Feet	
Depth (mld)	4,27 m – 14 Feet	
GRT / NRT	1441 / 433	
Deck Loading	7 T/M ²	

Particulars given are entirely without warranty as to correctness and interested party must satisfy themselves by inspection of ship's certificate or by other means of vessel's specification.

231



SHIPS COPY
 NOT REVIEWED
 APPROVED BY: [Signature]
 8 - APR 2018
 [Signature]

MAIN DIMENSIONS:
 LENGTH OVER ALL : 120'-0"
 BREADTH OVER ALL : 30'-0"
 DEPTH MOULDED : 14'-0"

DECK LAYOUT 7.002

SCALE	1" = 30'	DATE	08.12.18
DRAWN BY	STW/21	DESIGNED BY	SLS/29
CHECKED BY		APPROVED BY	[Signature]

GENERAL ARRANGEMENT

PROJECT	280'X60'X14' DECK CARGO BARGE
TITLE	GENERAL ARRANGEMENT
DATE	08.12.18
SCALE	1" = 30'
DRAWN BY	STW/21
CHECKED BY	
APPROVED BY	[Signature]

SIN LEONG SIENG
 HARDWARE & MACHINERY PTE LTD