



**PT. Capitol Nusantara Indonesia Tbk**

Perkantoran Permata Eksekutif Blok R1/3-R2/3  
 Pos Pengumben, Kebon Jeruk, Jakarta Barat  
 11550, Indonesia

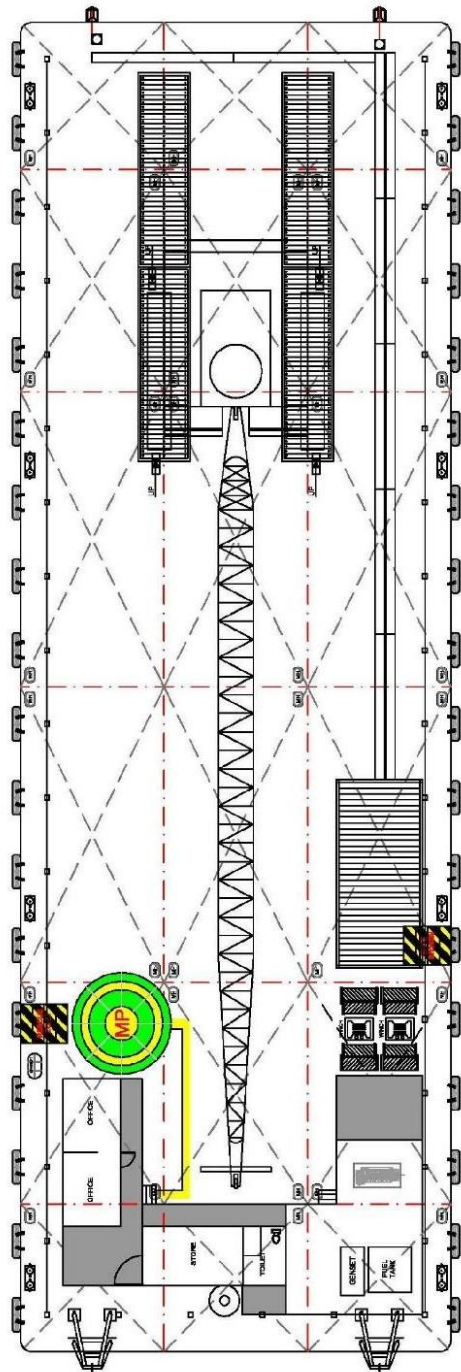
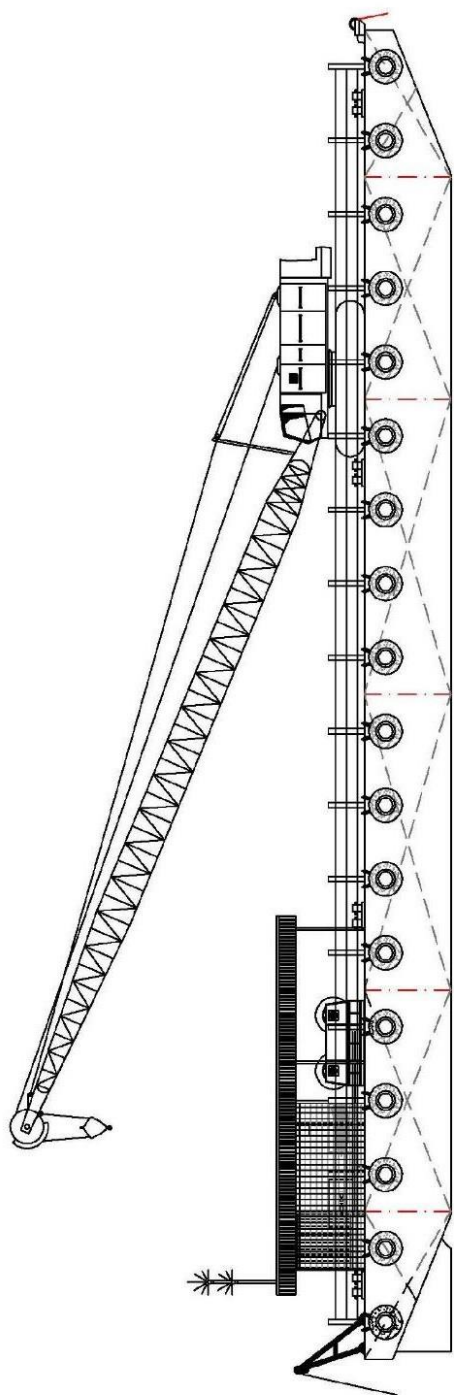
Telp. +62 (21) 530 7340, Fax. +62 (21) 532 6254  
 Email. [charter@cni.co.id](mailto:charter@cni.co.id), Website. [www.cni.co.id](http://www.cni.co.id)

# CAPITOL 1801

## 180 FT WORKING BARGE



PRINCIPAL PARTICULARS		DECK EQUIPMENT
Class	BKI	Crane Hitachi Sumitomo SCX-2000
Registration Mark	2010 Ilk No. 5422/L	Office & Store room / 1 container each
Port of Registry	Samarinda	Accommodation / 1 Room 8 Person
Year of Built	2010	4 x Hydraulic Anchor Winch SWL 6 Ton
Place of Built	Batam	4 pcs x Stockless Anchor 2.9T
Builder	PT. Cemara Intan Shipyard	Bollards
<b>Dimension</b>		Stanchions
Length (loa)	54.86 m (180 ft)	Smit Towing Brackets Forward and Aft.
Length (reg)	52.67 m (172.8 ft)	Navigation Lights
Breadth (mld)	18.29 m (60 ft)	1 x Genset Nippon S NES 35 SHE 30 kVA
Depth (mld)	3.66 m (12 ft)	2 x LifeRaft Youlong Rubber for 20 Person
Draft (max)	2.93 m (9.6 ft)	3 cyl x Fire Extinguisher
GRT / NRT	919 / 176	2 pcs x A-Frame SWL 5 Ton
Deck load	15 Tons / m <sup>2</sup>	
Deck space	378 m <sup>2</sup>	
Particulars given are entirely without warranty as to correctness and interested party must satisfy themselves by inspection of ship's certificate or by other means of vessel's specification.		



PRINCIPAL DIMENSION

LENGTH L<sub>A</sub> : 54,864 M  
 BREADTH : 9,298 M  
 DEPTH : 2,059 M  
 DRAFT : 2,374 M

NO	REVISION	BY	DATE
PT. CAPTOL NIBANTABA, INDONESIA Gedung & Manufaktur Jl. Raya Klaten No. 100 Klaten, Jawa Tengah, Indonesia Telp: (0271) 798311, 79837888			
KEMERUPAKET <b>CAPITOL 1801</b> WORKING BARGE		NO. SK. 001 NO. RAB. 001	NO. 001 NO. 001 NO. 001
<b>GENERAL ARRANGEMENT</b>			
DESIGNER : PT. TRN	DATE : 20/10/20	SCALE : 1:100	NO. SHEET : 001
DRAWN : SUFIYO	DATE : 20/10/20	SCALE : 1:100	NO. SHEET : 001
CHECKER : JS			
APPROVED : RBN			
			NO. SHEET : 001

MAIN DECK PLAN