

**PT. Capitol Nusantara Indonesia Tbk**

Perkantoran Permata Eksekutif Blok R1/3-R2/3 Pos
Pengumben, Kebon Jeruk, Jakarta Barat 11550,
Indonesia

Telp. +62 (21) 530 7340, Fax. +62 (21) 532 6254

Email. charter@cani.co.id, Website. www.cani.co.id

TB. ASL PROSPER VI

A twin screw tug boat

**General**

Owner PT. Capitol Nusantara Indonesia Tbk
Type of Vessel Anchor Handling
Port of Registry Samarinda
Country Flag Indonesia
Call Sign YDB 6433
IMO Number 9750086

Tonnage Meas. No. GT.152 No. 5654/IIk
Register Mark 2014 lik No. 7035/L
Year of Built 2013
Place of Built Samarinda
Builder CV.Bunga Nusa Mahakam

Classification BKI "Offshore Services AH / Towing"

Engines

Main Engines Mitshubshi Marine
2 x S6R2-MPTK2,600 Hp @ 1900 Rpm
Gear Box 2 x New Advance Gear,Box

Generator Ratoos 6::1
2 x 3 Yanmar Marine Genset
33 KVA, 4 TNV98-GGE

Steering Gear R&D Electric Hydraulic Of 2.5 Tons
Pump Bilge, G.S, Ballast and Fire Pumps
driven by Electric Motors

**Safety
Equipment**

Life rafts 2 unit @ 15 persons capacity
Life jackets 20 persons

Dimension

Length Reg. / LoA 22.18 m / 23.65 m
Breadth Molded 7.00 m
Depth Molded 3.20 m
Draft Fully Loaded 2.40 m
Deck Cargo Space
Gross / Net 152 / 46
Tonnage
F/W Tank Capacity 29.866 cum
Fuel Tank Capacity 55.170 cum
Daily Tank. 3.4736 cum

**Radio
Communication**

VHF Radio ICOM Model IC-MI27
SSB Radio ICOM Model IC-M710
MMSI 525 018 357
Handheld Radio 2 x ICOM

**Navigation
Equipment**

Echosounder Furuno FVC-620
GPS Furuno GP-32
Compass Table Type T150 Daiko
Radar Furuno 16ML Model : 1623

Deck Equipment

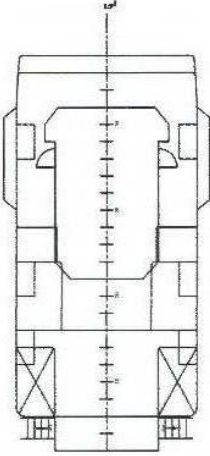
Search Light 2 x 1000 Watts Each
Flood Light 2 x 500 Watts
Towing Hook 25 Tons

Bollard Pull 12 Tons
Anchor Winch Swl 5.6 Ton
Accommodation 12 persons

Particulars given are entirely without warranty as to correctness and interested party must satisfy themselves by inspection of ship's certificate or by other means of vessel's specification.

DIPERIKSA UNTUK TANDA KELAS :
Examined for Class Notation :

A 100 I P " OFFSHORE SERVICE VESSEL " AH : TOW



WHELLHOUSE

BIRO KLASIFIKASI INDONESIA

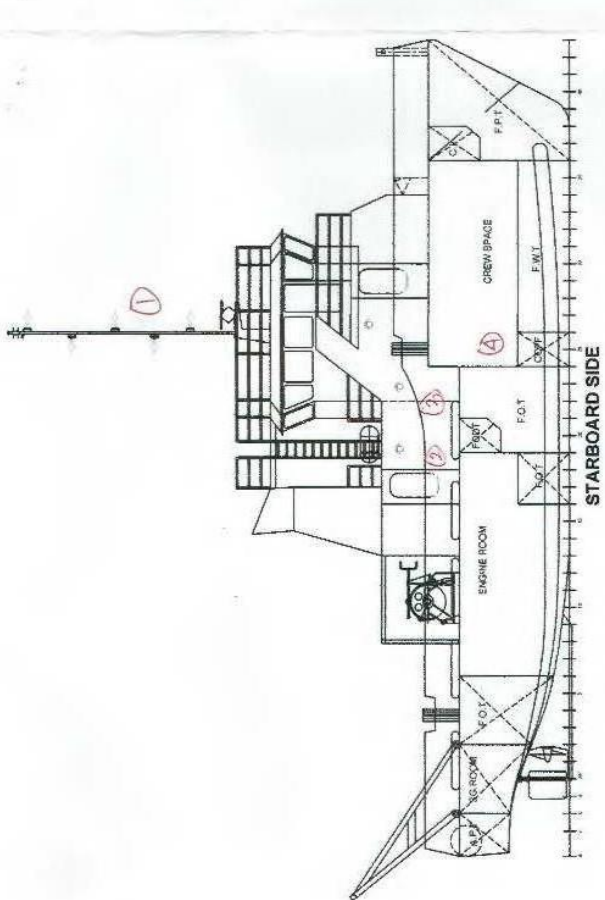
SEEN
DIKETAHUI

Number : 1503030395

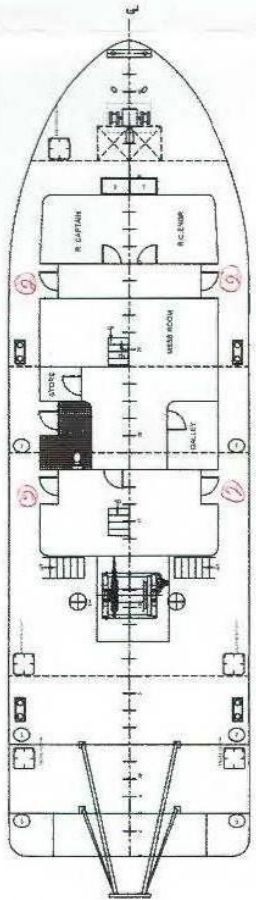
11 JAN 2016
SAMARINDA

PRINCIPAL DIMENSION

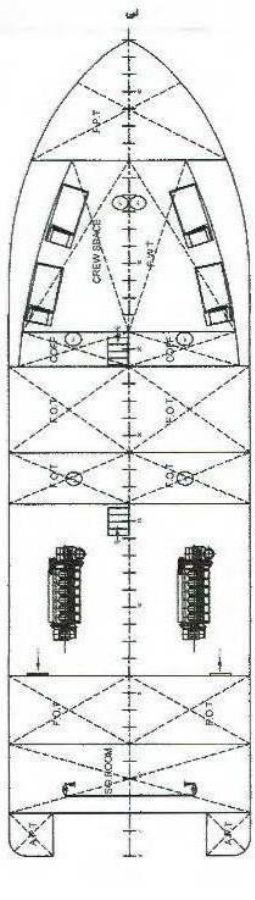
LENGTH O.A	23.75	M
BREADTH MLD	7.00	M
DEPTH MLD	3.20	M
DESIGNED DRAFT	2.40	M



STARBOARD SIDE



MAIN DECK



BELOW DECK

NOTE:
1. WINCH WAS RUN WITH INDEPENDENT GENERATOR

NO.	REVISION AS APPROVED CLASS NOTIFICATION	DATE
1.		
PT. CAPITOL NISANTARA INDONESIA TBK		
Jl. Pajeneh Selatan No. 30-34 Kec. Pajeneh, Kota Makassar, Sulawesi Selatan 70132 Telp. (0831) 4211333, 4211334, 4211335 Fax. (0831) 4211336, 4211337 E-mail: info@capitolni.com, www.capitolni.com		
VESSEL/PROJECT		
23 M UTILITY TUG		
ASL PROSPER VI		
GENERAL ARRANGEMENT		
TITLE		
DRAWER		
DESIGNED	24/11/2015	SCALE
CHECKED	24/11/2015	DRAWING NO.
APPROVED	24/11/2015	NO. SHEET
		1 OF 1