



**PT. Capitol Nusantara
Indonesia Tbk**

Perkantoran Permata Eksekutif Blok R1/3-
R2/3 Pos Pengumben, Kebon Jeruk, Jakarta
Barat 11550, Indonesia
Telp. +62 (21) 530 7340, Fax. +62 (21) 532 6254
Email. charter@cani.co.id, Website.
www.cani.co.id

TB. NUSANTARA ABADI

1

Ocean Going Tug



General

Dimension

Owner PT. Capitol Nusantara Indonesia Tbk
Type of Vessel Ocean Going Tug
Port of Registry Batam
Country Flag Indonesia
Call Sign POBN
Year of Built 2005
Place of Built Miri Malaysia
Builder Berjaya Dockyard Sdn Bhd
Classification BKI

Length Reg. / LoA 28.66 m / 31.00 m
Breadth Molded 9.15 m
Depth Molded 4.30 m
Draft Fully Loaded 3.50 m
Deck Cargo Space 102 m²
Gross / Net Tonnage 329 / 97
F/W Tank Capacity 44 m³
Fuel Tank Capacity 266 m³
Ballast Tank 42 m³

Engines

Main Engines Caterpillar
2 x Cat 3508B.2000 Hp @ 1600 Rpm
Gear Box 2 x Twindisc MG5301DC
Ratoo 4.550::1
Generator 2 x cummins genset model 6BT5.9-D
Rated 78 Kw@1500 Rpm
1 Emergency Genset 50 Kva
Steering Gear TP Raco dem 80/40.386 aste ws of 2.5T
Pump Bilge,G.S,Ballast and Fire Pumps driven
by Electric Motors
½ FIFI Pump SFP 250x350 HD/KHR 500-600 m³ x 2

Radio Communication

VHF Radio Furuno FM2710
SSB Radio Furuno FS-1503
Inmarsat Furuno Felcom 15

Navigation Equipment

Echosounder Furuno FVC-668
GPS Furuno GP-32
Compass SR150PK Magnetic
Radar XN12AF.96 NM
EPIRB 1 Nos McMurdo E3A

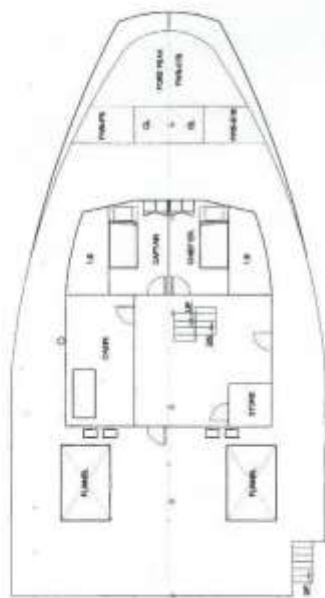
Safety Equipment

Life rafts 2 unit @ 25 persons capacity
Life jackets 25 persons

Deck Equipment

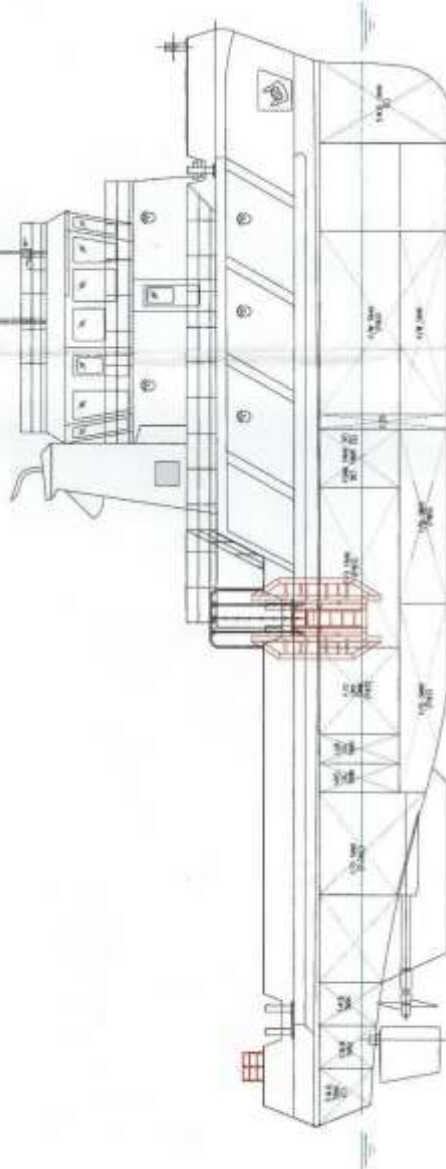
Search Light 2 x 1000 Watts Each
Flood Light 2 x 500 Watts
Towing Hook 40 Tons
Bollard Pull 20 Tons
Accommodation 22 persons,including crew

Particulars given are entirely without warranty as to correctness and interested party must satisfy themselves by inspection of ship's certificate or by other means of vessel's specification.



FORECASTEL DECK

- LOA 31.00 M
- LBP 27.99 M
- LWL 29.76 M
- BEAM MLD 8.15 M
- DEPTH MLD 4.30 M
- DESIGN DRAFT 3.50 M
- ACCOMODATION 13 PAX
- FUEL OIL 266.00 M³
- FRESH WATER 44.00 M³
- FUEL OIL 266 M³
- BALLAST (FW) 42 M³
- M.O.T 8.80 M³
- D.O.T 3 M³



OUT BOARD PROFILE

REV	MODIFICATION	BY	DATE
2	DUBAH SESUAI PERMINTAAN KLIEN	STY	18.7.12
1	DUBAH SESUAI PERMINTAAN HSW	STY	22.5.12



PT. AGUS SUTA LINE
 (Private & Limited Service)
 PT. Agus Suta Line
 Surabaya, East Kalimantan
 T. +62 (0)31 723951 P. +62 (0)31 723951
 E. info@agusline.co.id, info@www.agusline.co.id

VESSEL PROJECT

TB. NUSANTARA ABADI I

GENERAL ARRANGEMENT

DRAWN	DATE	SCALE	DWG. NO.
SUTOMO	25/09/2012	1:100	ARS-001
CHECKED	HEW SUPREDA		
APPROVED	HSW		

PAPER: A2 SHEET 1 OF 2